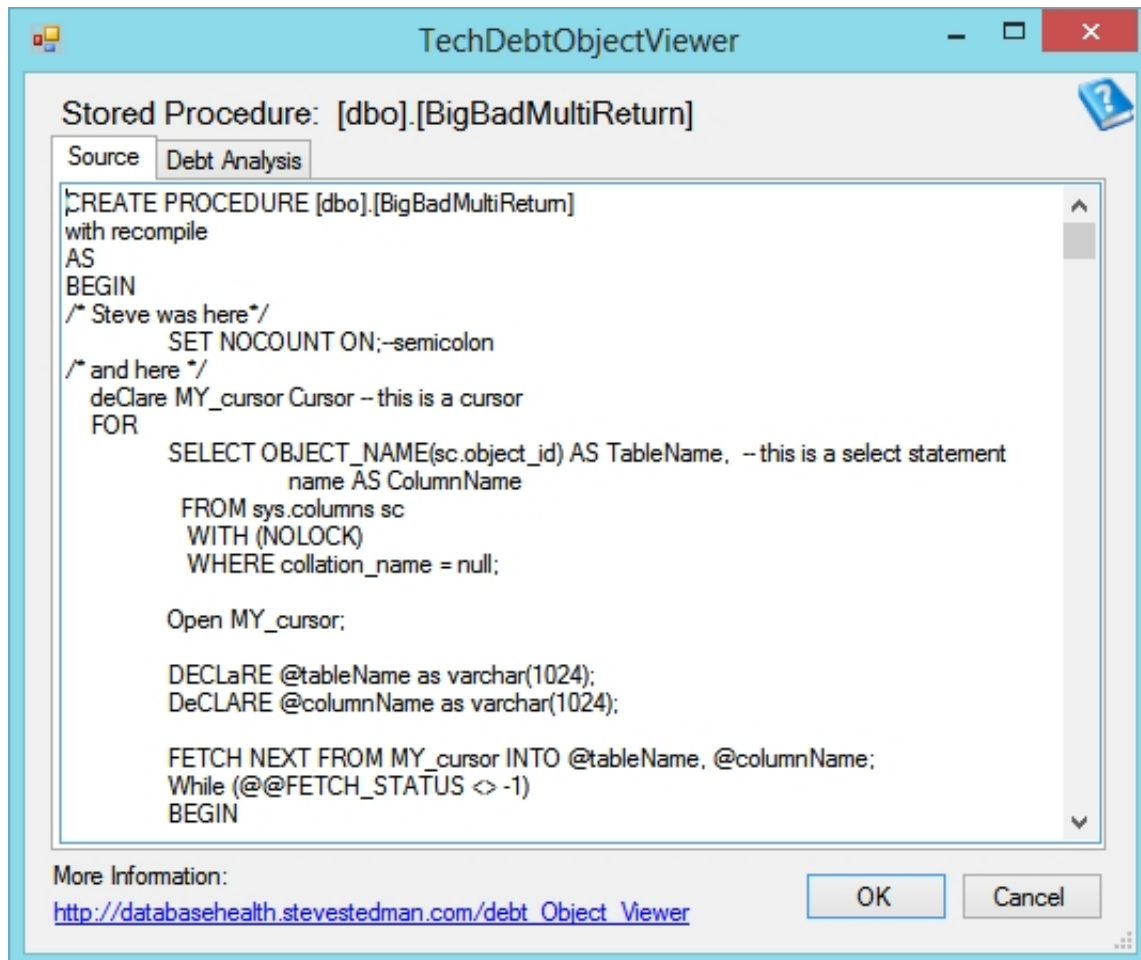


## Technical Debt Object Viewer

Once the Technical Debt report has been run you can click on any item in the Debt by Object list and get the specific details on the object in question. The example below shows the stored procedure BigBadMultiReturn and the contents of that procedure.



Next, when the Debt Analysis tab is clicked we see a full list of all of the technical debt associated with that one item.

TechDebtObjectViewer

Stored Procedure: [dbo].[BigBadMultiReturn]

Source

Debt Analysis

Score	Debt	Message	Link
1718	\$4,295.00	Length of 1818 exceeds maximum threshold	<a href="http://databasehealth.com">http://databasehealth.com</a>
1455	\$3,638.00	NOLOCK In Stored Procedure(97 found)	<a href="http://databasehealth.com">http://databasehealth.com</a>
520	\$1,300.00	Cursor In Stored Procedure(104 found)	<a href="http://databasehealth.com">http://databasehealth.com</a>
94	\$235.00	Keyword not upper case (return) in Stored Procedure (47)	<a href="http://databasehealth.com">http://databasehealth.com</a>
94	\$235.00	Keyword not upper case (Cursor) in Stored Procedure (47)	<a href="http://databasehealth.com">http://databasehealth.com</a>
94	\$235.00	Keyword not upper case (print) in Stored Procedure (47)	<a href="http://databasehealth.com">http://databasehealth.com</a>
94	\$235.00	Keyword not upper case (While) in Stored Procedure (47)	<a href="http://databasehealth.com">http://databasehealth.com</a>
94	\$235.00	Keyword not upper case (Open) in Stored Procedure (47)	<a href="http://databasehealth.com">http://databasehealth.com</a>
12	\$30.00	columns in WHERE clause missing table reference	<a href="http://databasehealth.com">http://databasehealth.com</a>
6	\$15.00	Keyword not upper case (as) in Stored Procedure (3)	<a href="http://databasehealth.com">http://databasehealth.com</a>
4	\$10.00	Keyword not upper case (by) in Stored Procedure (2)	<a href="http://databasehealth.com">http://databasehealth.com</a>
4	\$10.00	Keyword not upper case (is) in Stored Procedure (2)	<a href="http://databasehealth.com">http://databasehealth.com</a>
2	\$5.00	Keyword not upper case (group) in Stored Procedure (1)	<a href="http://databasehealth.com">http://databasehealth.com</a>
2	\$5.00	Keyword not upper case (null) in Stored Procedure (1)	<a href="http://databasehealth.com">http://databasehealth.com</a>
2	\$5.00	Keyword not upper case (select) in Stored Procedure (1)	<a href="http://databasehealth.com">http://databasehealth.com</a>
2	\$5.00	Keyword not upper case (and) in Stored Procedure (1)	<a href="http://databasehealth.com">http://databasehealth.com</a>
2	\$5.00	Keyword not upper case (of) in Stored Procedure (1)	<a href="http://databasehealth.com">http://databasehealth.com</a>

More Information:

[http://databasehealth.stevededman.com/debt\\_Object\\_Viewor](http://databasehealth.stevededman.com/debt_Object_Viewor)

OK

Cancel

## See Also:

- [Technical Debt Reporting](#)
- [SQL Server Technical Debt at http://SqlDebt.com](http://SqlDebt.com)