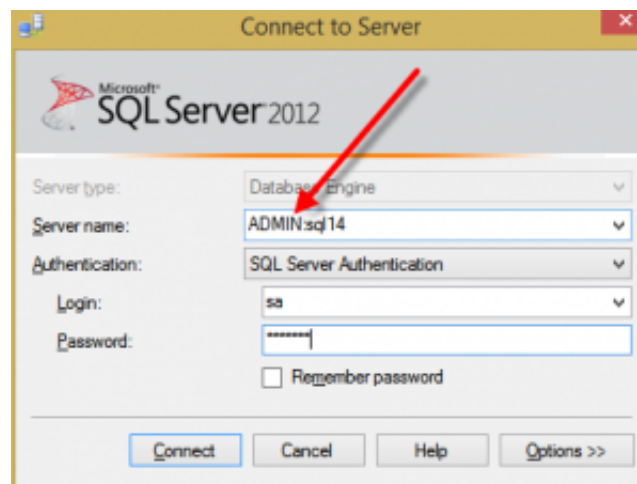


Quick Scan Report – Remote DAC

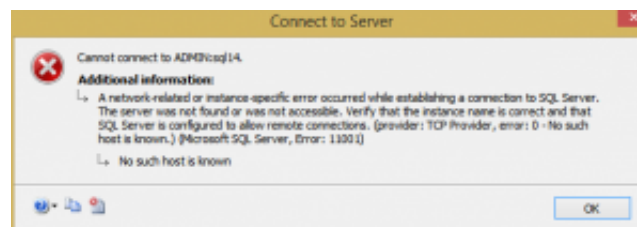
The [Quick Scan Report](#) shows the Remote DAC is not enabled.

The Remote DAC is the Dedicated Admin Connection. This is a special connection that allows a single administrator to connect to your SQL Server when the database is having issues.

One quick way to check if the DAC connection is available is to try connecting to the server name with ADMIN: in front of it from SSMS, like this:



If the DAC connection is not enabled, you will see an error message that looks like this.



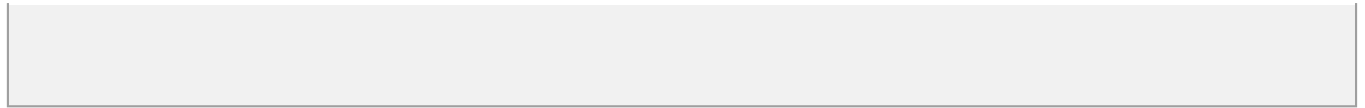
Another way to see if it is enabled is to open a normal connection to your database and run a query to check.

```
EXEC sp_configure 'remote admin connections';
```

If the running value is 0, then it is not configured. If it shows 1 then it is configured.

Using TSQL you can turn on the DAC like this:

```
EXEC sp_configure 'remote admin connections', 1;  
GO  
RECONFIGURE;  
GO
```



Be sure to run the RECONFIGURE command to allow the change to be activated.